




(Right)  
Shown with optional  
Pelican carrying case.



## Product Data CS Series

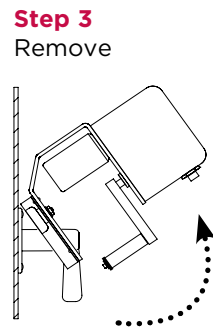
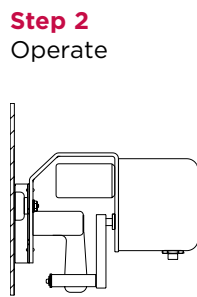
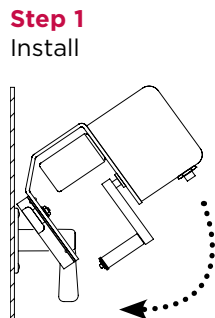
 Made in USA / U.S. Pat. No. 6,015,958

Our CS Series of actuators are a portable device designed and built to remotely operate control switches with pistol-grip style handles. Several models are available, depending on the type of control switch being controlled.

The CS Series of actuators are temporarily installed over your control switch and held in place using strong neodymium magnets (no modification to your switchgear required). A hand-held controller, connected by a control cable to the actuator, allows the operator to be positioned outside the Arc Flash Hazard Boundary. A motor and gearbox in the actuator rotates the control switch as commanded from the hand-held controller. A microcontroller monitors controller inputs, assures correct control switch positioning, and drives the motor through an intelligent H-bridge. The entire unit is battery powered (24VDC) which eliminates the need for external power.

### Three Easy Steps Installs in Seconds

No external power is needed and there are no modifications to your switchgear required.



### What do you get?

All models include the actuator, hand-held controller, cable, batteries, instruction manual, and carrying case.

### Which model do I need?

Use the Selection Tool Information Sheet to determine which CS model that you will need. The Selection Tool is also available online, or you can call us and we can help you with the selection.

### CS01 Options

#### Magnet

Available in circular or rectangular shape as required to avoid interferences near control switch

#### Control Cable

Available in 30' or 50'  
(Note: customer is responsible for determining cable length needed)

#### Carrying Case

Heavy duty Pelican case

**MarTek Ltd.**  
4806 Chimney Drive  
Charleston, WV 25302

p (304) 965-9220  
f (304) 965-9221

[www.chickenswitch.com](http://www.chickenswitch.com) (800) 248-4958

## Part Number Designations

**CM** = Round Magnet

**RM** = Rectangular Magnet

**30C** = 30ft Control Cable\*

**50C** = 50ft Control Cable\*

**ACC** = Aluminum Carrying Case

**PCC** = Heavy Duty Pelican Carrying Case

Model	CM	RM	30C	50C	ACC	PCC
CS01	•	•	•	•	•	•
CS02	•	•	•	•	•	•
CS03	•	•	•	•	•	•
CS04	•	•	•	•	•	•
CS05	•	•	•	•	•	•
CS06	•	•	•	•	•	•

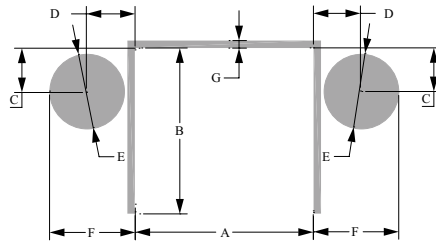
\*It is the customer's responsibility to assure that an accurate arc-flash study of the customer's electrical system has been performed and the customer must determine the length of cable necessary to protect personnel.

## Technical Specifications

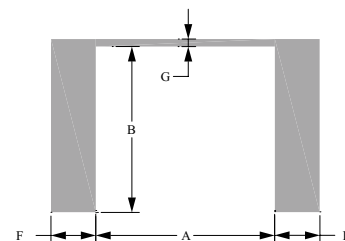
- Power Supply: 16 - AA alkaline disposable batteries (24VDC total). Good for approximately 700 operations
- Fuse: 5 amp, quick-blow, AGC-5
- Control Cable: 5-conductor, extra-flexible, PUR insulation, 30-feet (standard), 50-feet (optional)
- Typical Operating Time is 0.3 seconds for 45 degrees of rotation
- Torque = 55 inch-lbs (except CS05 which is 30 inch-lbs)
- Gearmotor: All metal gears in a formed metallic housing. DC brushed, permanent magnet motor with .375 inch diameter shaft
- Some models have two user selectable levels of rotation (of the actuator)
- A programmable microcontroller manages control inputs, motor functions, monitors and limits mechanical travel and performs timing functions to protect the motor in a stalled condition
- An intelligent 'H-bridge' motor driver provides start/stop/braking motor functions. The H-bridge has integral thermal shutdown protection.
- Controller: Requires two-hand operation. The 'enable' button must be depressed while rotating the controller selector switch.
- Projected Life: 20,000 operations



**Control Switch Model with Option CM Diagram**



**Control Switch Model with Option RM Diagram**



### Control Switch Models with Option CM

	A	B	C	D	E	F	G	Maximum Control Switch Eschutcheon thickness	Max Control Switch Handle width	# Magnets	Magnet Strength (gauss)	Selectable Rotation?
CS01	3.0"	2.9"	0.80"	0.80"	1.26"	1.42"	0.10"	0.60"	0.86"	2	12600	Yes
CS02	3.1"	2.8"	0.80"	0.80"	1.26"	1.42"	0.20"	0.80"	0.86"	2	12600	Yes
CS03	3.7"	3.38"	0.80"	0.80"	1.26"	1.42"	0.20"	0.80"	0.86"	2	12600	Yes
CS04	2.7"	3.38"	0.80"	0.80"	1.26"	1.42"	0.10"	0.60"	0.86"	2	12600	No
CS05	Not Available											
CS06	2.6"	2.68"	0.85"	0.70"	1.26"	1.35"	0.10"	0.38"	0.45"	2	12600	No

### Control Switch Models with Option RM

	A	B	F	G	Maximum Control Switch Eschutcheon thickness	Max Control Switch Handle width	# Magnets	Magnet Strength (gauss)	Selectable Rotation?
CS01	3.0"	2.9"	0.75"	0.10"	0.60"	0.86"	4	13200	Yes
CS02	3.1"	2.8"	0.75"	0.20"	0.80"	0.86"	4	13200	Yes
CS03	3.7"	3.38"	0.75"	0.20"	0.80"	0.86"	4	13200	Yes
CS04	2.7"	3.38"	0.75"	0.10"	0.60"	0.86"	4	13200	No
CS05	1.92"	1.93"	0.5"	0.10"	0.38"	0.50"	6	6929	No
CS06	Not Available								